



Personal use only

**SILVER**  
**MINES LIMITED**

*North America Presentation*  
*September 2022*

# Disclaimer

---

The material in this presentation contains certain forecasts and forward-looking information, including regarding possible or assumed future performance or potential growth of Silver Mines Limited (“SVL”). Such information is not a guarantee of future performance and involves unknown risks and uncertainties, as well as other factors, many of which are beyond the control of SVL. Actual results and developments may differ materially from those expressed or implied by these forward-looking statements depending on a variety of factors.

No representation or warranty, expressed or implied, is made or given by or on behalf of SVL, any of SVL’s directors, or any other person as to the accuracy or completeness or fairness of the information or opinions contained in this presentation and no responsibility or liability is accepted by any of them for such information or opinions or for any errors, omissions, misstatements, negligent or otherwise, or for any communication written or otherwise, contained or referred to in this presentation.

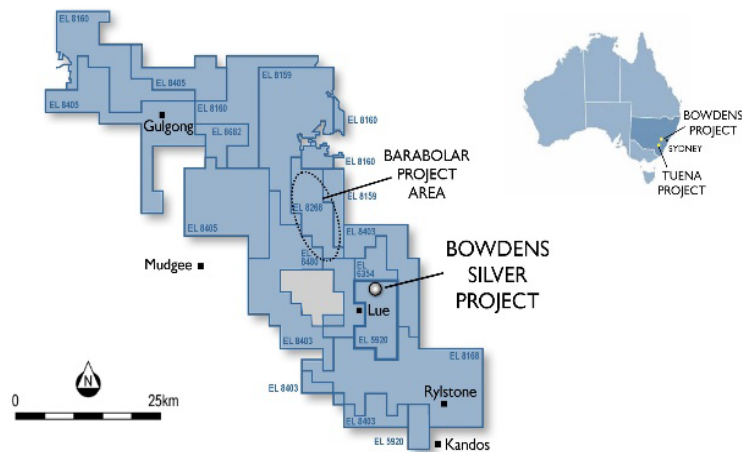
Accordingly, neither SVL nor any of the SVL directors, officers, employees, advisers, associated persons or subsidiary undertakings shall be liable for any direct, indirect or consequential loss or damage suffered by any person as a result of relying upon the statement or as a result of any admission in, or any document supplied with, this presentation or by any future communications in connection with such documents and any such liabilities are expressly disclaimed.

Nothing in this material should be construed as either an offer to sell or a solicitation of an offer to buy or sell securities.

# Silver Mines Limited: Introduction

## Key Assets

- ✓ **The Bowdens Silver Project** is located in central New South Wales, Australia.
- ✓ The consolidated project is 100% held and the area comprises **1,950km<sup>2</sup> (480,000 acres)** of titles covering approximately 80km of strike of the highly mineralised Rylstone Volcanics.
- ✓ The Bowdens Silver Project is the **largest undeveloped silver deposit in Australia** with substantial resources and a considerable body of high quality technical work already completed.
- ✓ The Project is in the final stages for mine development approvals.
- ✓ Initial production 6Moz silver per annum.



## Capital Structure (ASX: SVL)

	AUD	USD
Shares on Issue ( <i>m</i> )	1,291.8	1,291.8
Share Price (\$)	0.18	0.12
<b>Undiluted Market Capitalisation (\$m)</b>	<b>232.5</b>	<b>158.1</b>
Cash (\$m, as at end March 2022)	21.8	14.8
<b>Enterprise Value (\$m)</b>	<b>210.7</b>	<b>143.3</b>

### Options

ESOP @ A\$0.30 Dec 2024	9.0m
3 Year Milestone @ A\$0.20	5.0m

## Directors

<b>Keith Perrett</b>	Non-Executive Chairman
<b>Anthony McClure</b>	Managing Director
<b>Jonathan Battershill</b>	Non-Executive Director
<b>Kristen Podagiel</b>	Non-Executive Director

# Silver Mines Limited: Progress

## Recent Highlights

- ✓ Lodgement of Development Application for the Bowdens Silver open-cut mine development.
- ✓ Approvals expected circa late 2022.
- ✓ Initial production 6Moz silver per annum.
- ✓ Maiden Underground Mineral Resource Statement complete (42.9 Moz Ag Eq.).\*
- ✓ Scoping Study commenced for a potential underground development.
- ✓ Continued outstanding drilling results from Bowdens Silver, the vast mineralised system remains open.
- ✓ Three diamond drilling rigs continue on-site.
- ✓ Well positioned for continued momentum in a positive silver price environment.

\* Refer to Appendix 3.

## Silver Mines Limited Share Price Graph



# Bowdens Silver Project: Overview

## Highlights

- ✓ The **largest silver development project in Australia** with a current JORC-compliant Mineral Resource base of 318Moz\* silver equivalent.
- ✓ 100% owned asset located in a **low sovereign risk jurisdiction** for mining development with ready access to existing infrastructure.
- ✓ Bowdens well-advanced, with production expected in 2024/25.
- ✓ Feasibility Study completed and government approvals submitted – received positive responses from regulators with a **clear pathway to development approval**.
- ✓ Low initial capital requirement of A\$246m/US\$185m to develop a 2Mtpa project, producing an average of 6Moz AgEq over the first 3 years of production at an average cash cost of US\$9.15/oz, underpinning strong EBITDA and cash flow.
- ✓ **Considerable exploration potential** at the Bowdens Silver Project, with extensive drilling underway and confirmed significant high-grade extensions to mineralisation close to mine.

\* Refer below and Appendices 2 and 3.

## Timeline of Major Milestones

- September 2017**  
Open-Cut Mineral Resource complete (275 Moz AgEq)
- May 2018**  
Ore Reserve complete (97 Moz AgEq)
- June 2018**  
Feasibility Study complete
- May 2020**  
EIS Complete, Development Application Submission
- September 2022**  
Underground Mineral Resource complete (43 Moz AgEq)
- 2022 – 2023**  
Approval Processes & Optimisation

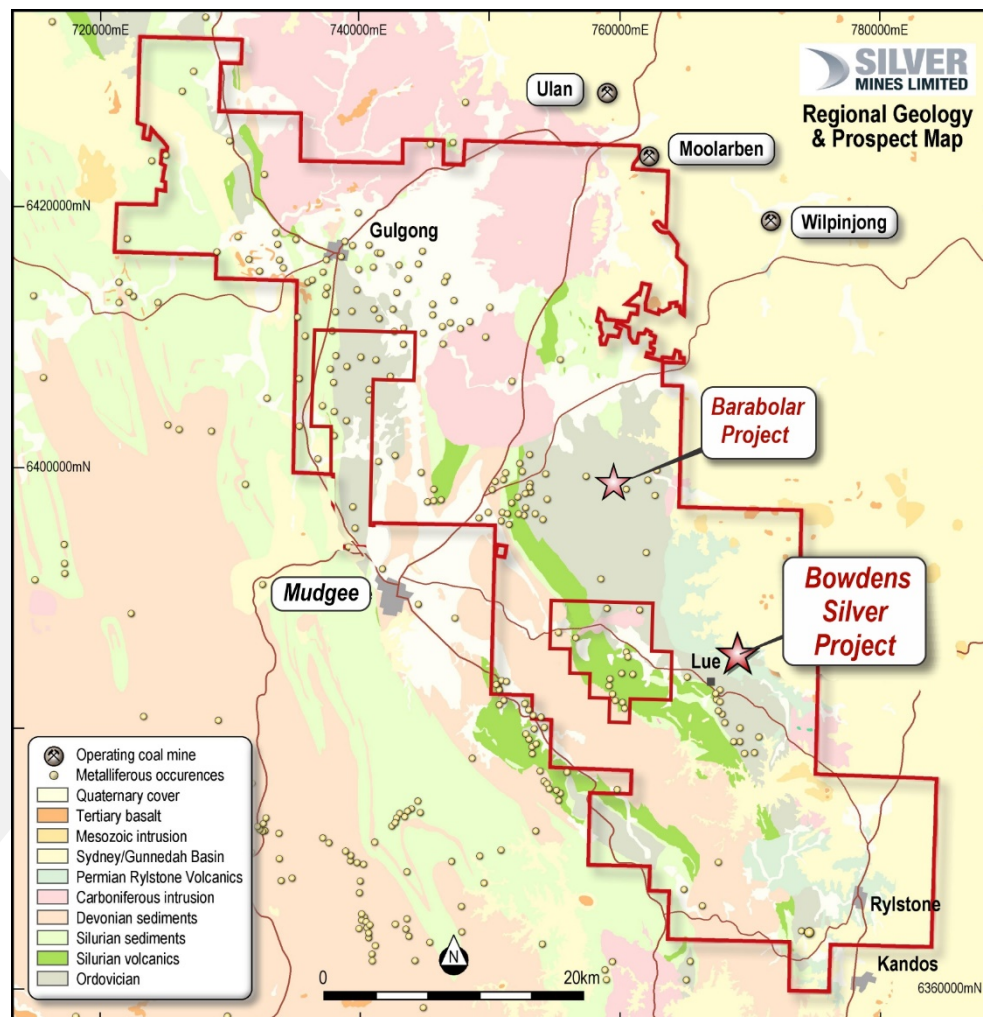
## Reserves and Resources<sup>(1)</sup>

	Tonnes Mt	Grade					Contained Metal				
		Ag g/t	Zn %	Pb %	Au g/t	AgEq g/t	Ag Moz	Zn kt	Pb kt	Au koz	AgEq Moz
<b>Ore Reserve</b>	30	69	0.44	0.32	-	101	66	131	95	-	97
<b>Mineral Resource</b>											
<b>Open Cut</b>	128	40	0.38	0.26	-	67	163	486	333	-	275
<b>Underground</b>	6.4	63	1.84	0.97	0.29	209	13	117	62	59	43
		<b>176</b>	<b>603</b>	<b>395</b>	<b>59</b>	<b>318</b>					

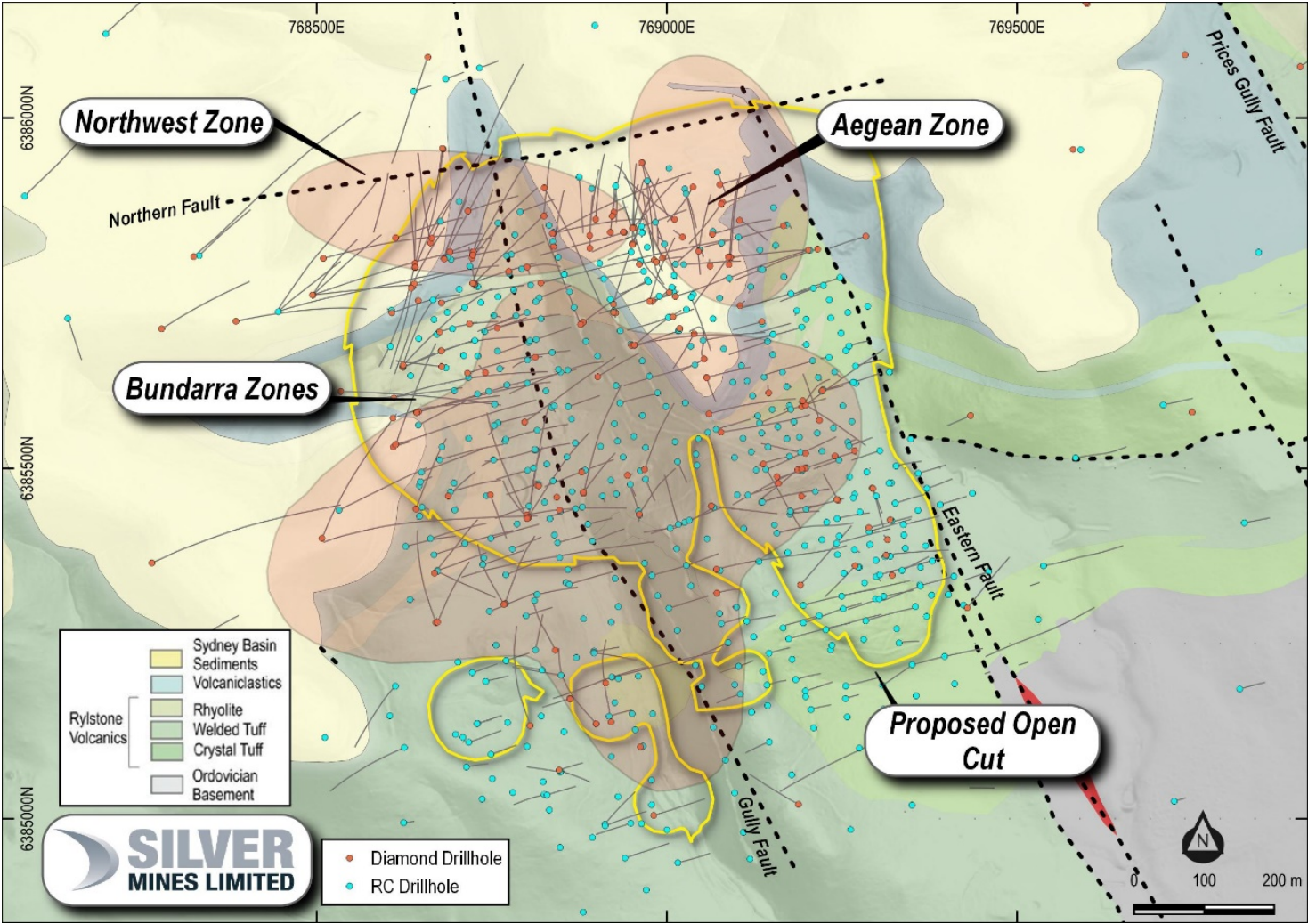
Notes: (1) Calculations have been rounded to the nearest 100,000 t, 0.1 g/t silver and 0.01% zinc and lead grades respectively. The Ore Reserve is reported by economic cut-off grade with appropriate consideration of modifying factors including costs, geotechnical considerations, mining and process recoveries and metal pricing. Bowdens' silver equivalent: Ag Eq (g/t) = Ag (g/t) + 33.48\*Pb (%) + 49.61\*Zn (%) + 80\*Au (g/t) calculated from prices of US\$20/oz silver, US\$1.50/lb zinc, US\$1.00/lb lead, US\$1600/oz gold and metallurgical recoveries of 85% silver, 82% zinc, 83% lead and 85% gold estimated from test work commissioned by Silver Mines Limited. Also, refer to Appendices 1, 2 & 3.

# Bowdens Silver Project: Regional Geology

- **Extensive tenement holding** (1,950 km<sup>2</sup> = 480,000 acres) 100% controlled by Silver Mines.
- **Wide range of prospective deposit types** over different time periods (Ordovician, Siluro-Devonian, Carboniferous and Permian).
- Mid-Carboniferous **Rylstone Volcanics** (~325Ma) consisting of rhyolitic to dacitic pyroclastics, epiclastics and lava's with recently defined porphyritic intrusion within the deposit.
- Overlain by the Permo-Triassic Sydney Basin sediments (< 270 Ma).
- The Bowdens deposit is a **low to intermediate sulphidation, carbonate silver-base metal-gold epithermal system**.
- Vein types include – **breccia, stringer, dissemination, banded and colloform** textured veins.
- Mineralisation age is ~321 Ma.



# Bowdens Silver: Mine Geology



ersonal use only

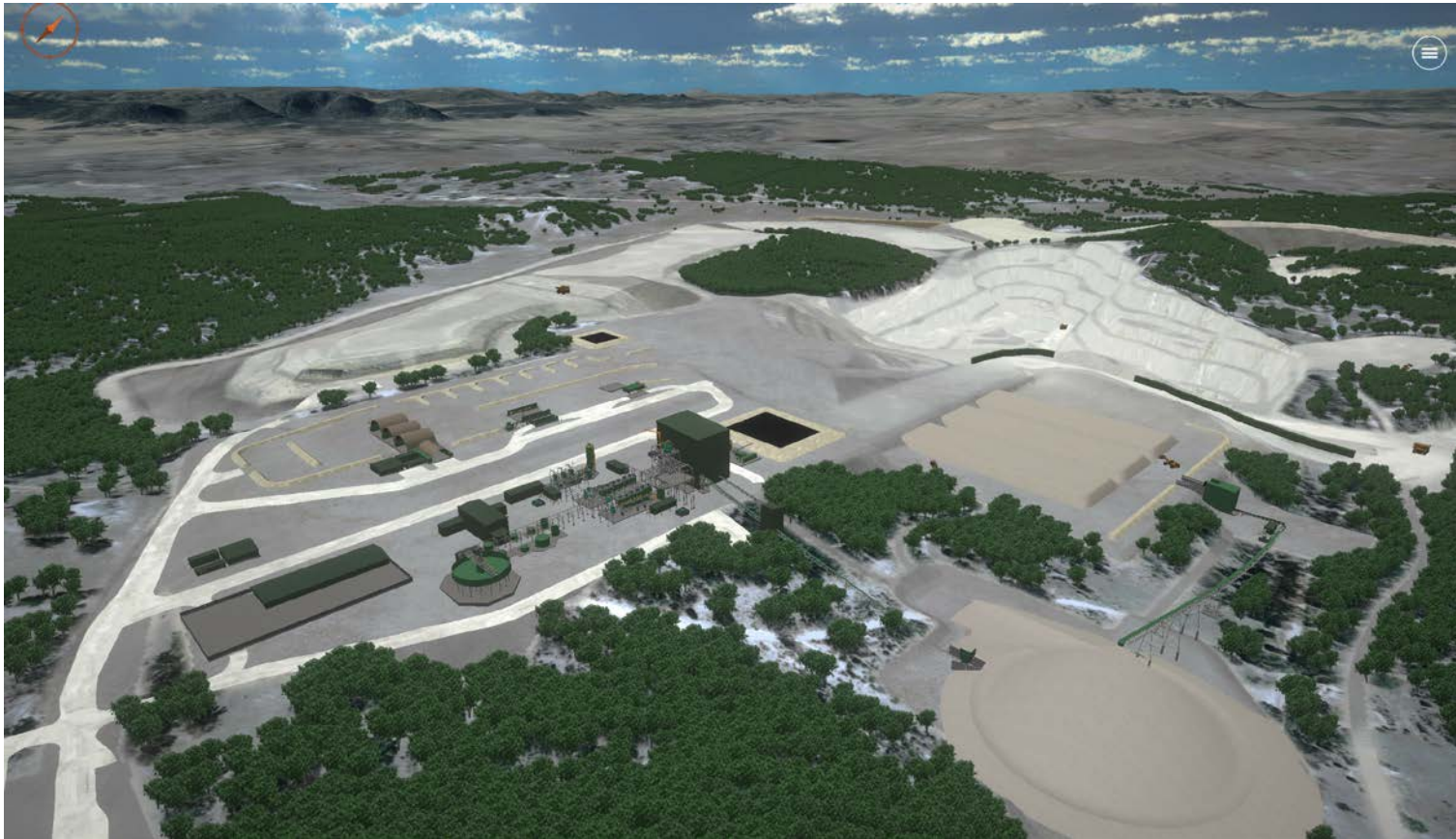


• Diamond Drillhole  
• RC Drillhole



# Bowdens Silver

## *Mine Development*



Personal use only



# Bowdens Silver Project: Study Work

	Unit	Feasibility Upside Case <sup>2</sup>		Feasibility Base Case <sup>1</sup>	
<b>Physical Metrics</b>					
Production Life	Years	16.5		16.5	
Ore Mined	Mt	29.9		29.9	
Waste Mined	Mt	48.2		48.2	
W:O Strip Ratio	x	1.60		1.60	
Ag Recovered in Concentrate	Moz	52.91		52.91	
Zn Recovered in Concentrate	kt	108.0		108.0	
Pb Recovered in Concentrate	kt	79.3		79.3	
<b>Financial Metrics</b>					
		AUD	USD	AUD	USD
Revenue	\$m	2,162.0	1,621.5	1,899.5	1,424.7
Operating Expenses	\$m	1,353.9	1,015.5	1,340.8	1,005.6
Operating Margin	\$m	808.0	606.0	558.7	419.0
<b>Capital Costs</b>					
		AUD	USD	AUD	USD
Initial	\$m	246.0	184.5	246.0	184.5
LOM Sustaining	\$m	53.9	40.4	53.9	40.4
<b>Unit Costs (Silver Basis)</b>					
		AUD	USD	AUD	USD
C1 Costs	\$/oz	15.52	11.64	15.47	11.60
All in Sustaining Cost (AISC)	\$/oz	17.53	13.15	17.25	12.94

<sup>1</sup> 2018 Feasibility Study Base Case: Silver prices assumed were LOM averages US\$20.90 /oz, a zinc price of US\$1.25 /lb and a lead price of US\$1.00 /lb.

<sup>2</sup> 2018 Feasibility Study Upside Case: Silver prices assumed were LOM averages US\$25.00 /oz, a zinc price of US\$1.25 /lb and a lead price of US\$1.00 /lb.

For further information refer to ASX release of 14<sup>th</sup> June 2018.

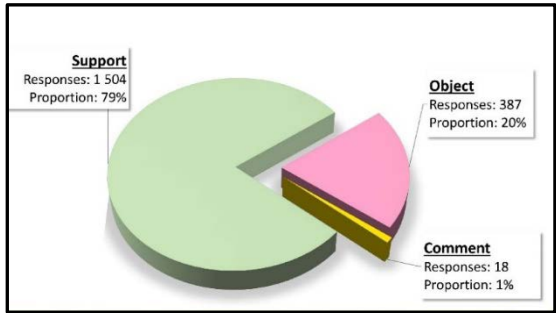
# Bowdens Silver Project: Approvals Timeline

Personal use only



Environmental Impact Assessment Phase	Social Impact Assessment Activities and Outputs
<b>SCOPING</b>	
Preliminary social & environmental assessment studies commence	Engagement with local landholders and key stakeholders
Lodgement of Preliminary Environmental Assessment (PEA) to the Department	
Department issues project-specific Secretary Environmental Assessment Requirements (SEARs)	
<b>EIS PREPARATION</b>	
Refinement of mine plans and preparation of assessment studies listed on the previous page	Preparation of Social Impact Assessment
Lodgement of Development Application supported by the EIS including a SIA	
<b>PUBLIC EXHIBITION</b>	
Department places EIS on public exhibition	
<b>RESPONDING TO SUBMISSIONS</b>	
Preparation of Submissions Report that explains how submissions have been addressed	
<b>ASSESSMENT</b>	
Department assesses the Project and provides its findings to the consent authority	
<b>DETERMINATION</b>	

✓ Community Support



# Bowdens Silver Exploration

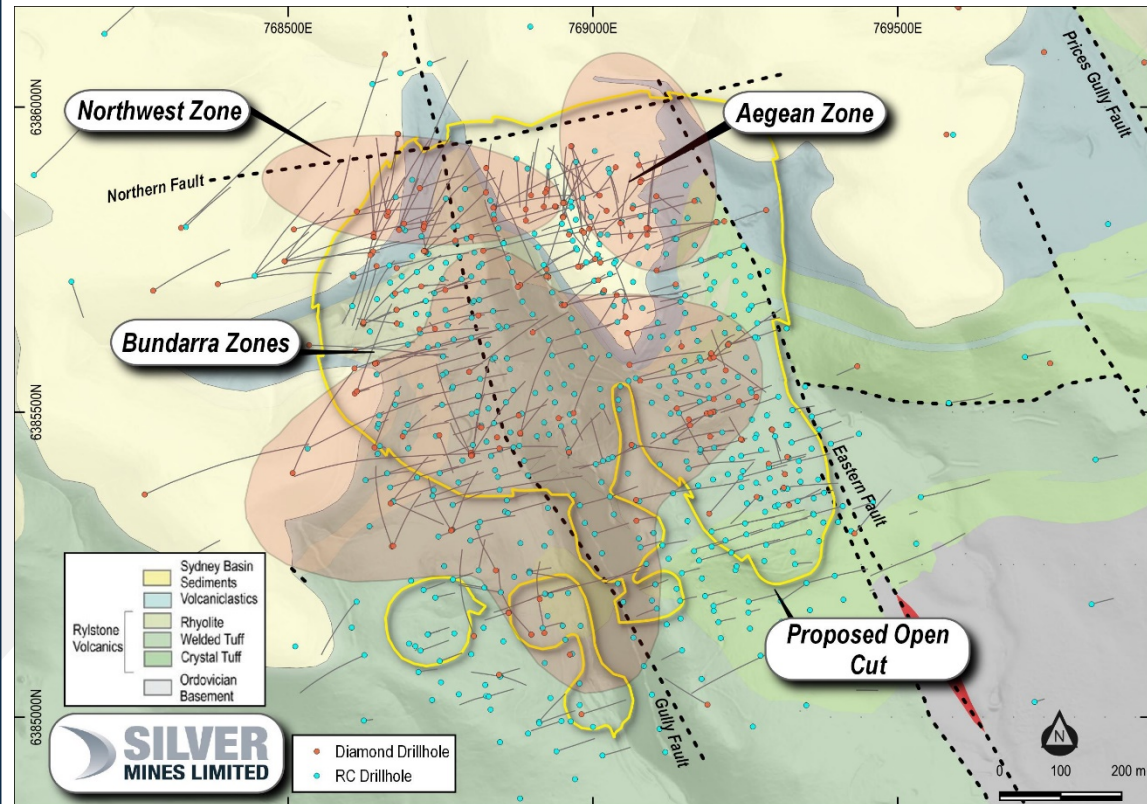
## *A Major Silver System*



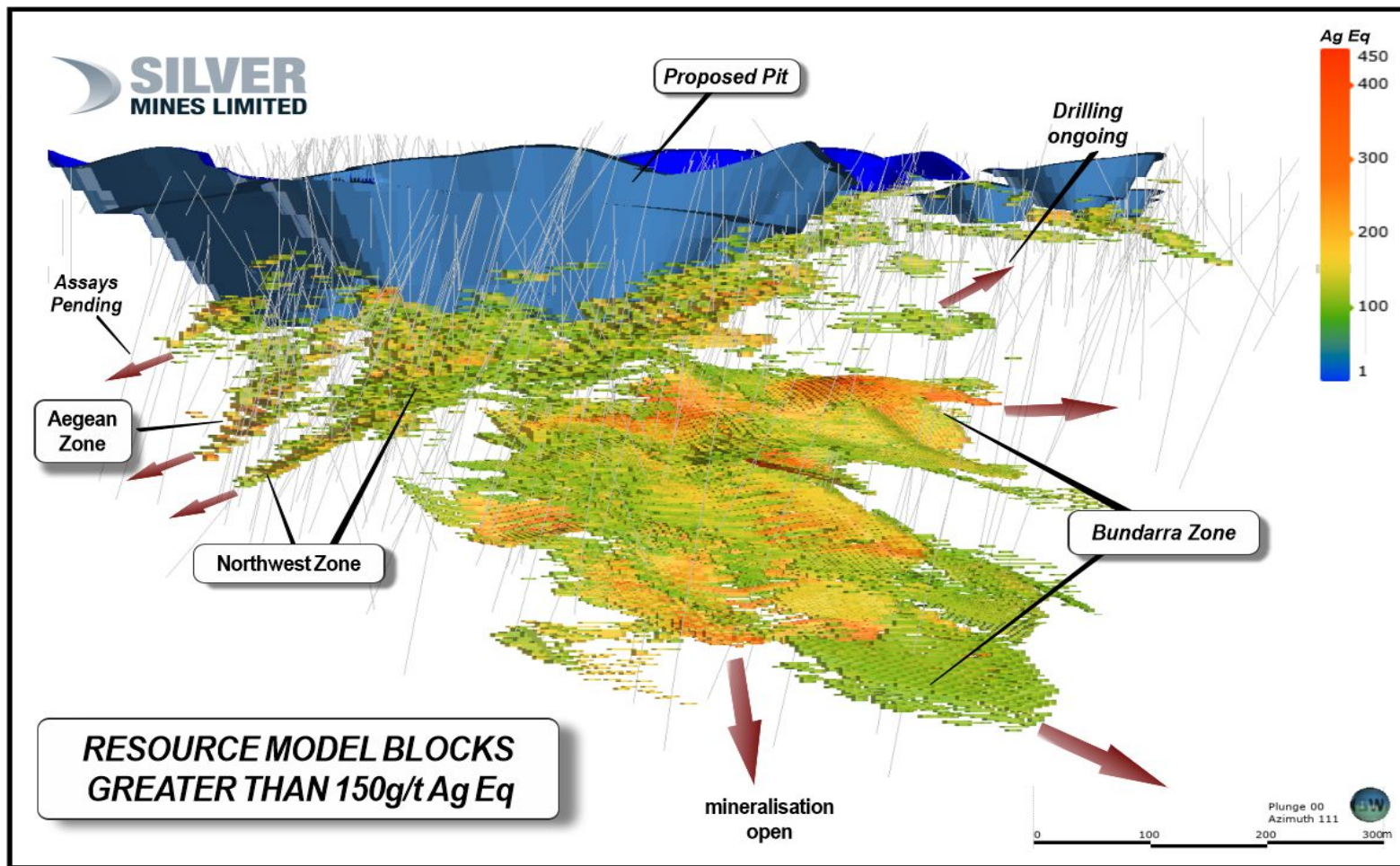
# Bowdens Silver Project: Extensions

- ✓ Northwest Zone, Aegean and Bundarra Zones contains high-grade silver directly under the planned open-cut pit.
- ✓ Drilling demonstrates that the Northwest and Aegean Zones are likely to be connected.
- ✓ Bundarra Zone with greater base metal (zinc & lead) plus gold.
- ✓ Each of the three discoveries open in several directions.
- ✓ Greater gold tenor as drilling moves south and east of open-cut area.
- ✓ Maiden Underground Mineral Resource of 42.9Moz Ag Eq.\*
- ✓ Scoping Study for a contiguous underground development advanced.
- ✓ Potential for 0.5Mtpa of additional material to the Bowdens plant.
- ✓ Total Mineral Resource now 318 Moz Ag Eq.

\* Refer to Appendix 3.

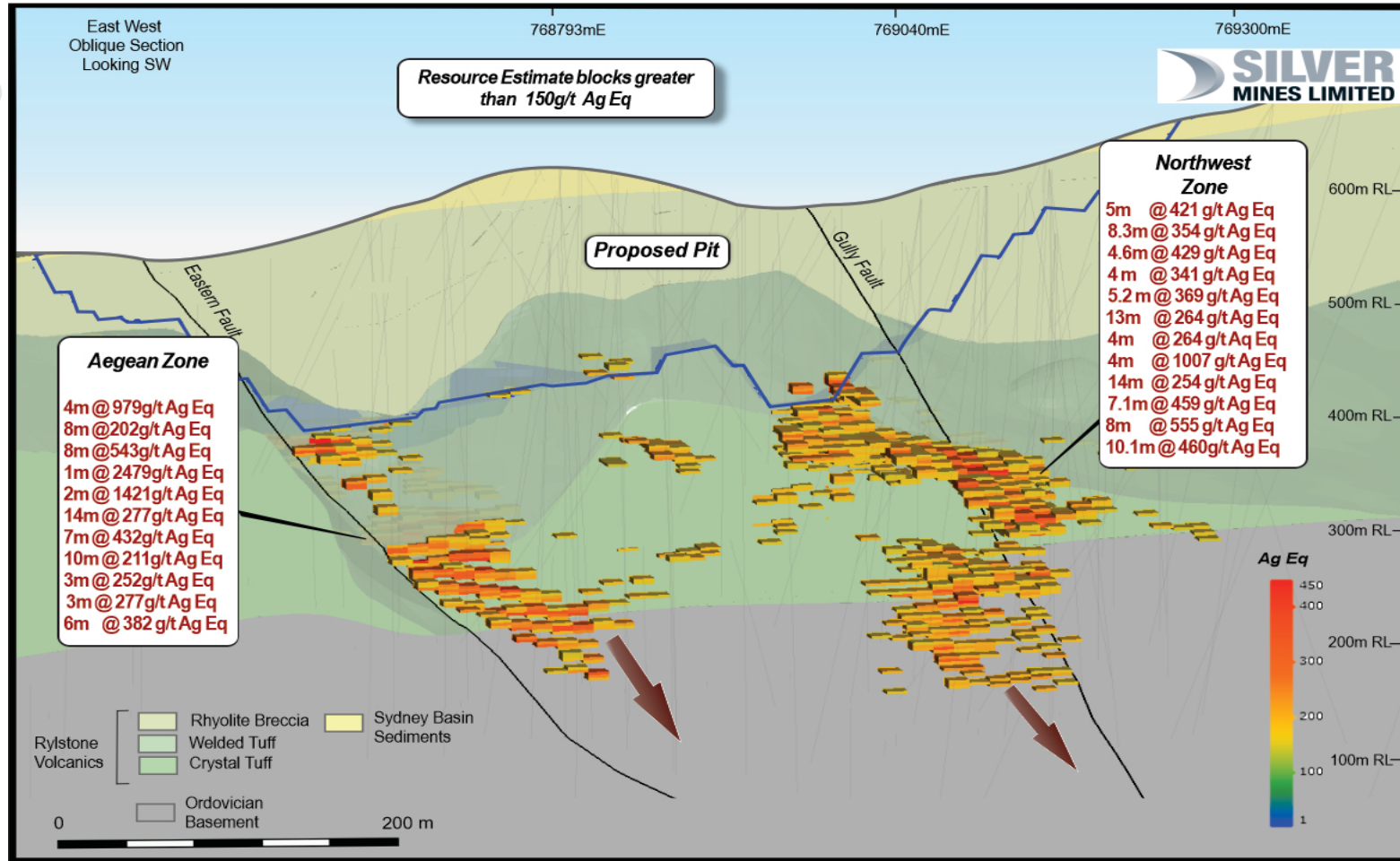


# Bowdens Silver Project: Extensions



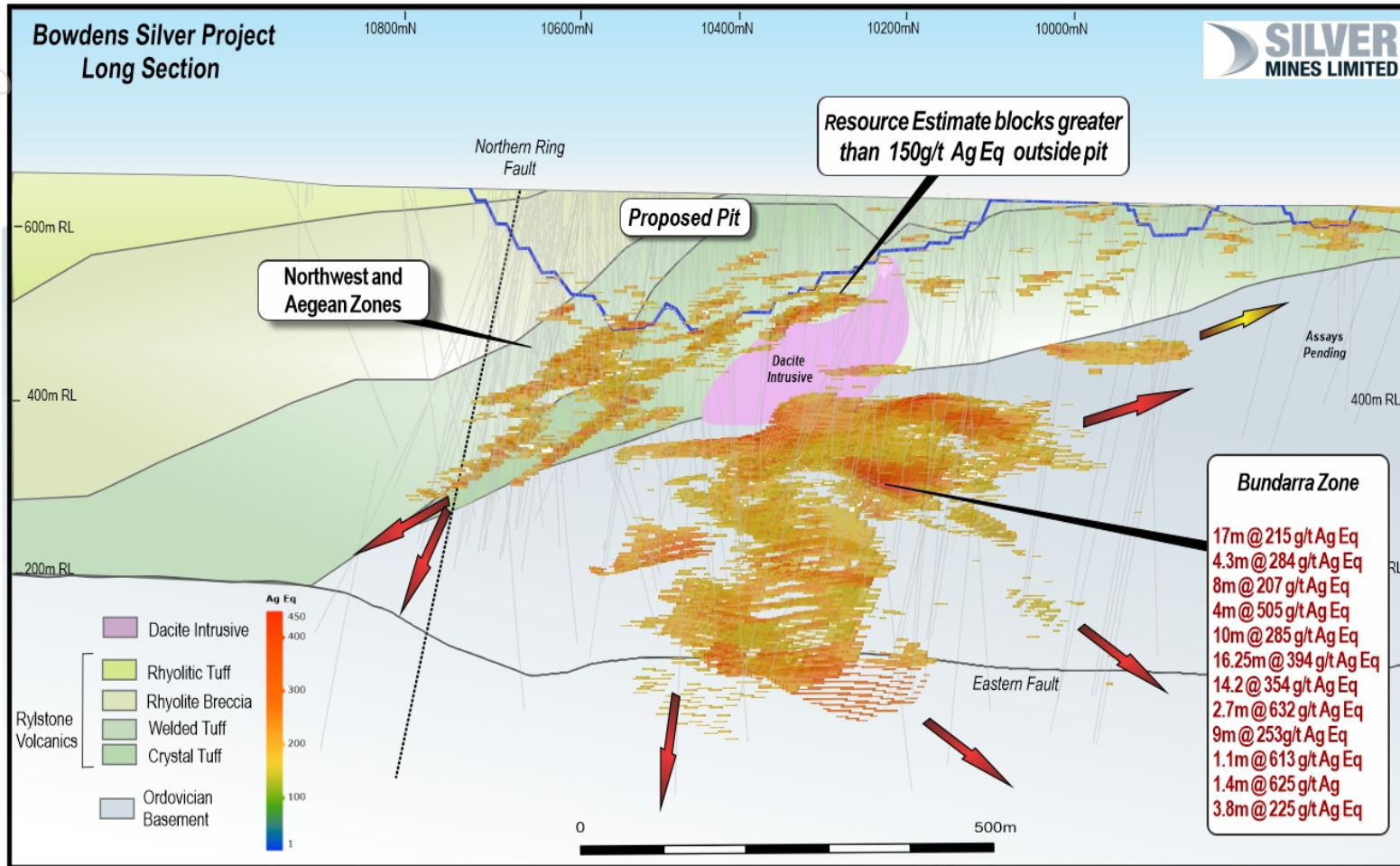
ersonal use only

# Bowdens Silver Project: Extensions



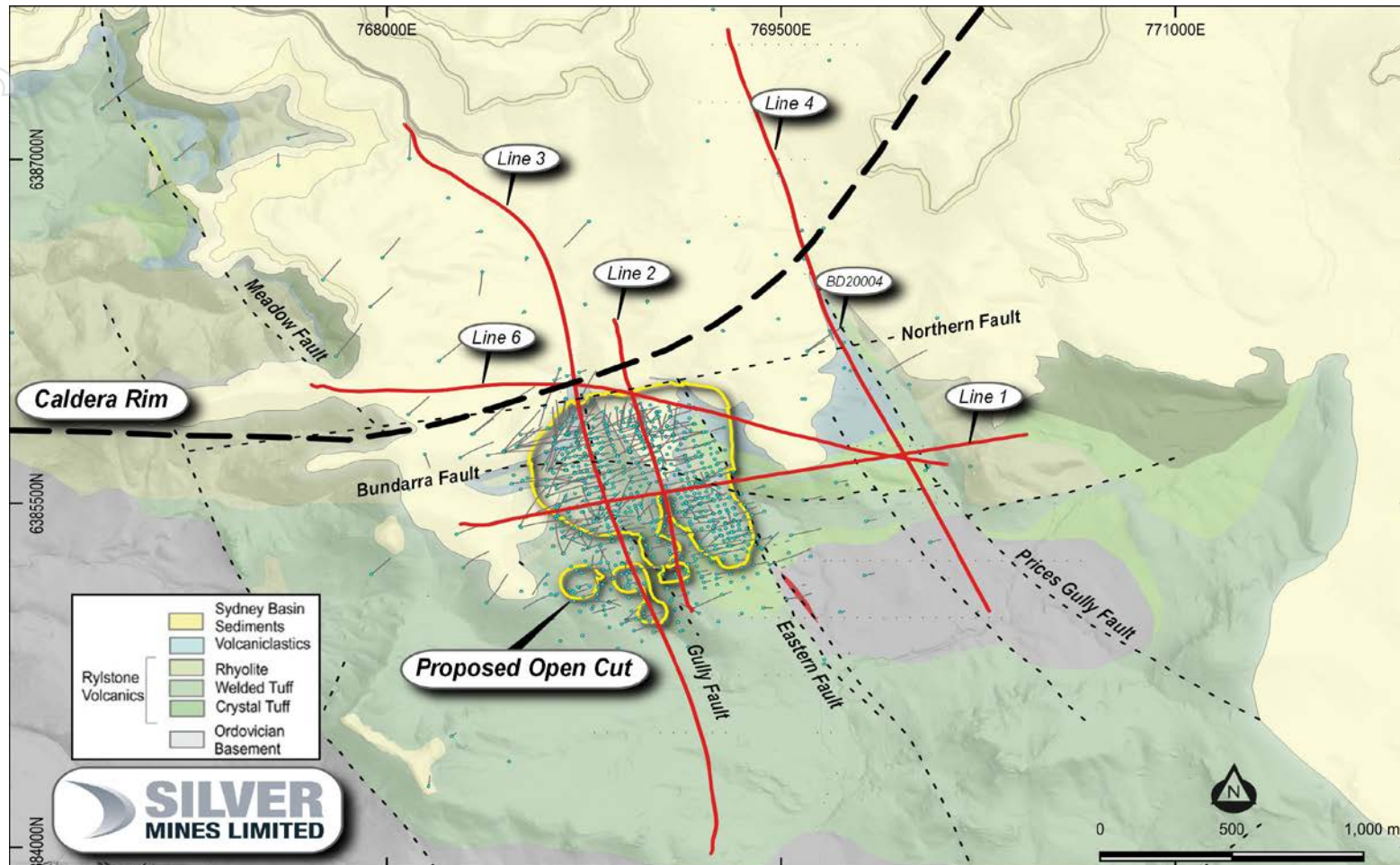
ersonal use only

# Bowdens Silver Project: Extensions



Personal use only

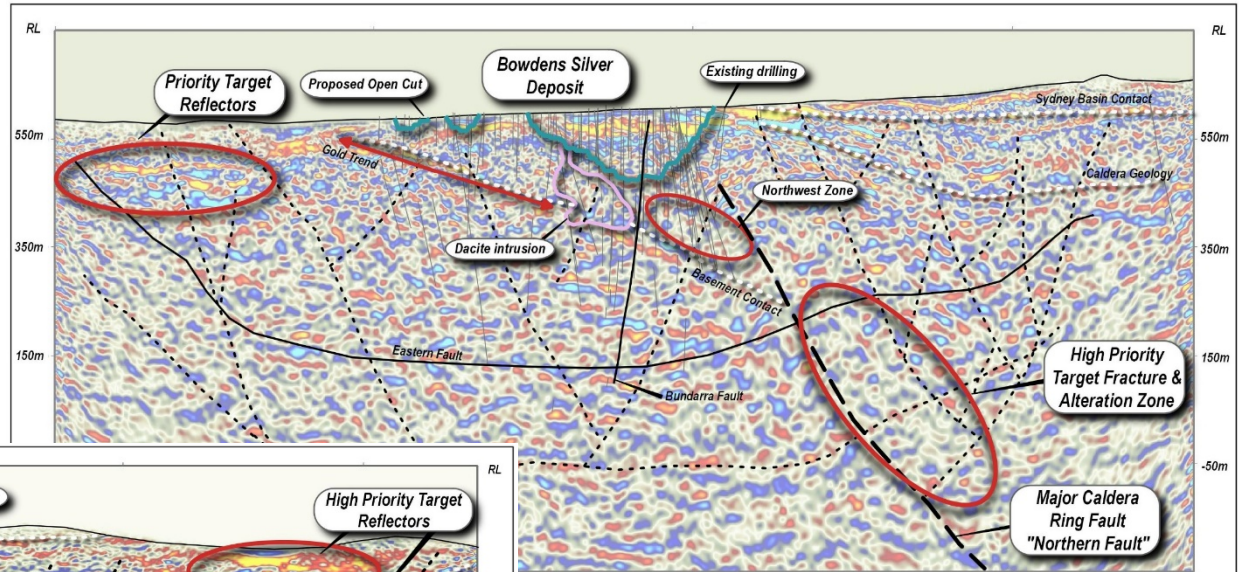
# Bowdens Silver Project: Seismic Program



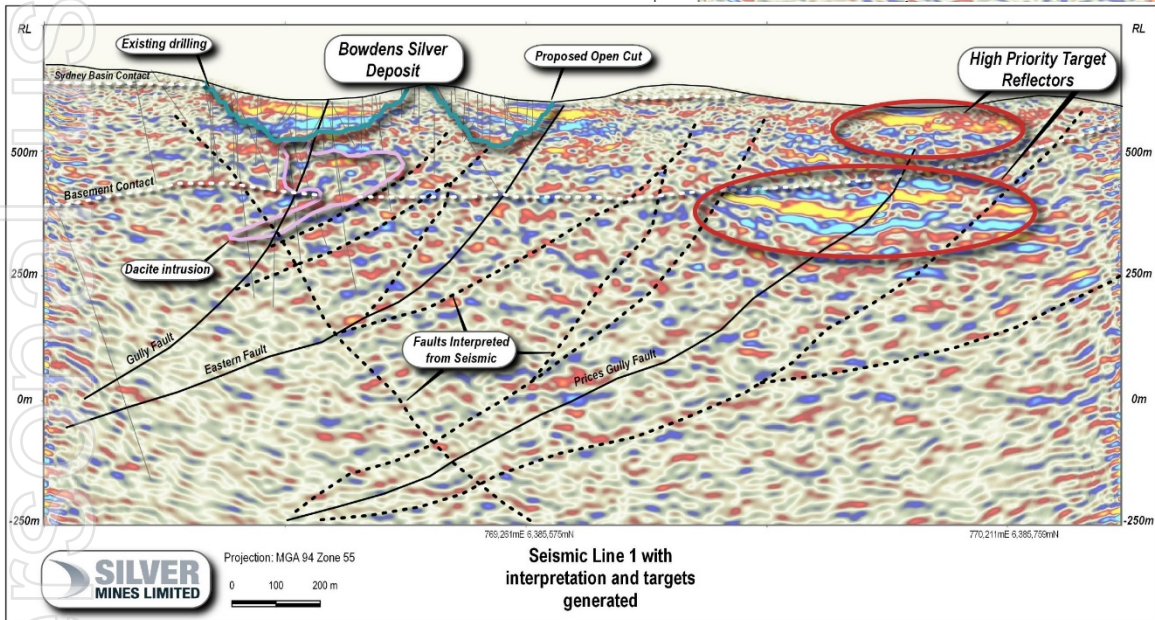
Personal use only



# Bowdens Silver Project: Seismic Program



Seismic Line 3 with interpretation and targets generated



Seismic Line 1 with interpretation and targets generated



Projection: MGA 94 Zone 55



# Bowdens Silver Project: Key Conclusions



The **largest silver development project in Australia** with a current JORC-compliant Resource base of 318 Moz Ag Eq.



**Bowdens well-advanced, with production expected in 2024-25** – Feasibility Study completed and the government Development Application submitted – positive responses from regulators and stakeholders.



**Low initial capital requirement** of A\$246m / US\$185m to develop a 2Mtpa project, producing an average of 6Moz Ag per annum over the first 3 years of production at an average cash cost of US\$9.15/oz, underpinning **strong EBITDA and cash flow**.



**Considerable exploration potential** with extensive drilling underway. Confirmed significant high-grade extensions to mineralisation close to mine. **Underground Mineral Resource now complete (42.9 Moz)** and Scoping Study commenced for a potential underground development in addition to the current open-cut development.



Assets located in a **low sovereign risk jurisdiction** for mining development with **ready access to existing infrastructure**.



**Single open-cut mine** with uncomplicated mining, a low strip ratio and metallurgy with an initial mine life of 16 years.

**Potential expansion** with underground operation.

# *Other Exploration Assets*

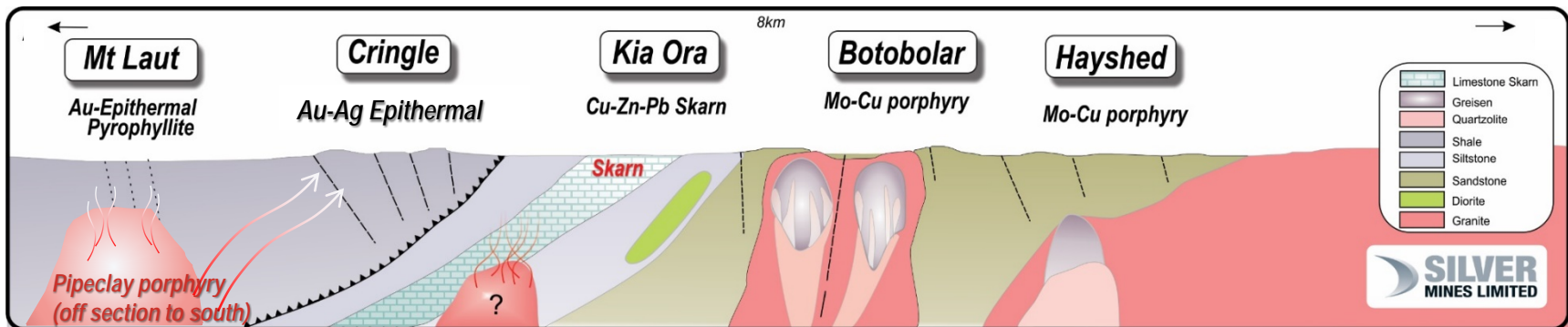
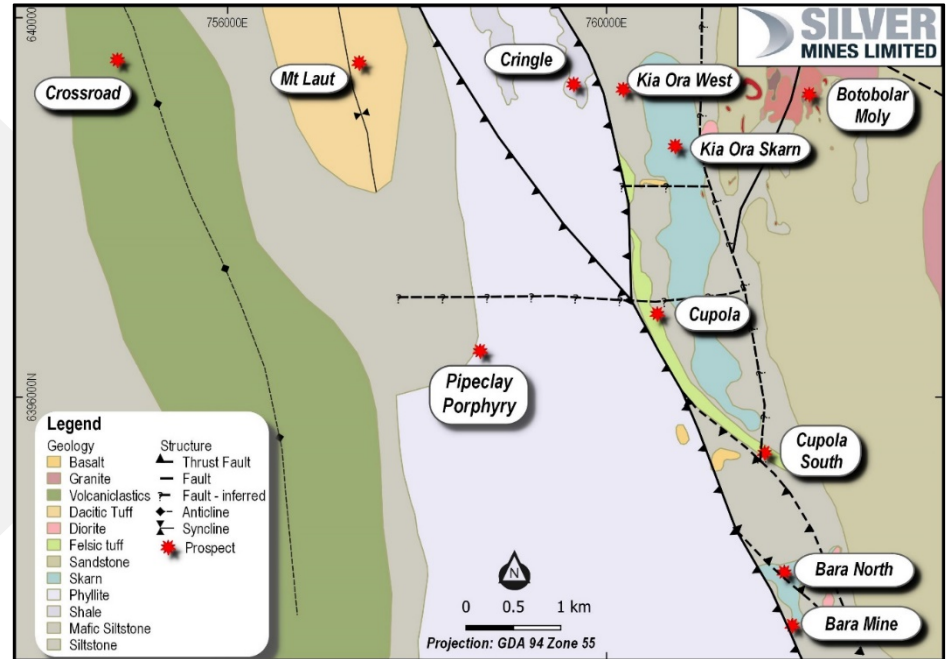
---



ersonal use only

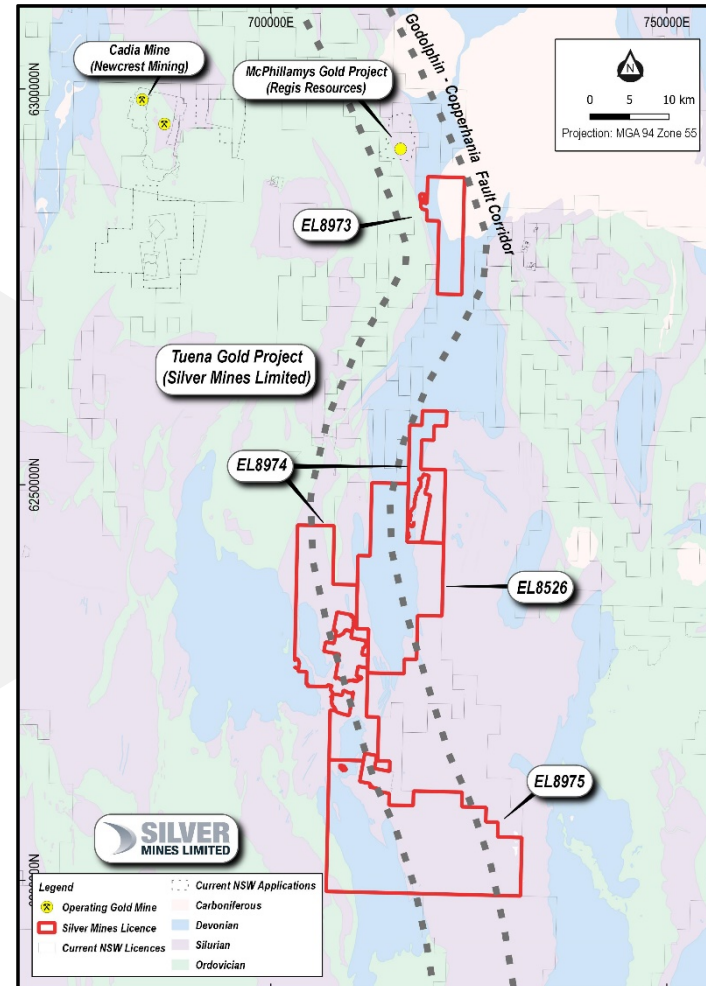
# Barabolar Project: Unlocking a Major Mineralised System

- Barabolar Project area located 10 kilometres northwest of Bowdens Silver.
- 9000 x 2000 metre corridor of base-metal and precious metal soil anomalies.
- Mineralised skarn mapped over 5000 by 800 metres.
- Porphyry system type alteration assemblages.
- Drilling re-commenced.



# Tuena Gold Project: An evolving gold/copper region

- Located south of Blayney in New South Wales.
- Historic goldfield with minimal exploration work in the modern era.
- Clear geological analogies to the McPhillamys Gold Project (2.0 Moz gold).
- Mineral system and old gold workings extend over at least 6 kilometres of strike.
- Reconnaissance mapping is identifying previously unrecorded historic workings and shear zones with substantial width.
- Airborne magnetics and radiometrics survey completed.
- First pass drilling complete.
- Tenement position expanded with 747 km<sup>2</sup> of exploration licenses, all granted, all 100%.





*Anthony McClure*  
*Managing Director*  
*Silver Mines Limited*  
*+61 2 8316 3997*



ersc  
only

# Appendix 1 – Bowdens Silver Ore Reserve

(as at May 2018)

	Tonnes (Mt)	Silver Eq. (g/t)	Silver (g/t)	Zinc (%)	Lead (%)	Silver Eq. Million Ounces	Silver Million Ounces	Zinc Kilo- tonnes	Lead Kilo- tonnes
Proved	28.6	102.2	69.75	0.44	0.32	93.85	64.05	125.11	91.43
Probable	1.3	84.4	53.15	0.43	0.29	3.60	2.27	5.74	3.91
<b>Total</b>	<b>29.9</b>	<b>101.4</b>	<b>69.01</b>	<b>0.44</b>	<b>0.32</b>	<b>97.45</b>	<b>66.32</b>	<b>130.84</b>	<b>95.33</b>

The Bowdens Reserve has been compiled by AMC Consultants Pty Ltd and is based on the September 2017 Mineral Resource Estimate generated for Silver Mines by H & S Consultants Pty Ltd (see ASX announcement 19 September 2017). For full disclosures refer to the Silver Mines Limited announcement of 30 May 2018.

1. Calculations have been rounded to the nearest 100,000 t, 0.1 g/t silver and 0.01% zinc and lead grades respectively. The Ore Reserve is reported by economic cut-off grade with appropriate consideration of modifying factors including costs, geotechnical considerations, mining and process recoveries and metal pricing.
2. Bowdens' silver equivalent:  $\text{Ag Eq (g/t)} = \text{Ag (g/t)} + 33.48 \cdot \text{Pb (\%)} + 49.61 \cdot \text{Zn (\%)}$  calculated from prices of US\$20/oz silver, US\$1.50/lb zinc, US\$1.00/lb lead and metallurgical recoveries of 85% silver, 82% zinc and 83% lead estimated from test work commissioned by Silver Mines Limited.

# Appendix 2 – Bowdens Silver Open Cut Resource

(as at September 2017)

30 g/t Ag Eq Cut	Tonnes (Mt)	Silver Eq. (g/t)	Silver (g/t)	Zinc (%)	Lead (%)	Million Ounces Silver	Million Ounces Silver Eq.
Measured	76	72	45	0.37	0.25	111	175
Indicated	29	59	31	0.38	0.25	29	55
<b>Measured &amp; Indicated</b>	<b>105</b>	<b>68</b>	<b>41</b>	<b>0.37</b>	<b>0.25</b>	<b>140</b>	<b>230</b>
Inferred	23	60	31	0.40	0.28	23	45
<b>Total</b>	<b>128</b>	<b>67</b>	<b>40</b>	<b>0.38</b>	<b>0.26</b>	<b>163</b>	<b>275</b>

The Bowdens Mineral Resource Estimate has been compiled by H&S Consultants Pty Ltd using Multiple Indicator Kriging and the reporting is compliant with the 2012 JORC Code and Guidelines. For full disclosures refer to the Silver Mines Limited announcement of 19 September 2017.

1. Bowdens' silver equivalent:  $\text{Ag Eq (g/t)} = \text{Ag (g/t)} + 33.48 \cdot \text{Pb (\%)} + 49.61 \cdot \text{Zn (\%)}$  calculated from prices of US\$20/oz silver, US\$1.50/lb zinc, US\$1.00/lb lead and metallurgical recoveries of 85% silver, 82% zinc and 83% lead estimated from test work commissioned by Silver Mines Limited.
2. Bowdens Silver Mineral Resource Estimate is reported to a 30g/t Ag Eq cut off and extends from surface and is trimmed to 300 metres RL which is approximately 320 metres below surface representing a potential volume for open-pit optimisation models.
3. In the Company's opinion, the silver, zinc and lead included in the metal equivalent calculations have a reasonable potential to be recovered and sold.
4. Variability of summation may occur due to rounding.



# Appendix 3 – Bowdens Silver Underground Resource

(as at September 2022)

150 g/t Ag Eq Cut	Tonnes (Mt)	Silver Eq. (g/t)	Silver (g/t)	Zinc (%)	Lead (%)	Gold (g/t)	Million Ounces Silver Eq.
Measured	1.55	212	139	0.82	0.73	0.10	10.6
Indicated	2.01	217	55	2.02	1.12	0.31	14.1
<b>Measured &amp; Indicated</b>	<b>3.56</b>	<b>214</b>	<b>92</b>	<b>1.50</b>	<b>0.95</b>	<b>0.22</b>	<b>24.7</b>
Inferred	2.81	202	26	2.26	0.99	0.38	18.3
<b>Total</b>	<b>6.37</b>	<b>209</b>	<b>63</b>	<b>1.84</b>	<b>0.97</b>	<b>0.29</b>	<b>42.9</b>

The Bowdens Mineral Resource Estimate has been compiled by H&S Consultants Pty Ltd using Multiple Indicator Kriging and the reporting is compliant with the 2012 JORC Code and Guidelines. For full disclosures refer to the Silver Mines Limited announcement of 5 September 2022.

1. Bowdens' silver equivalent:  $\text{Ag Eq (g/t)} = \text{Ag (g/t)} + 33.48 \cdot \text{Pb (\%)} + 49.61 \cdot \text{Zn (\%)} + 80 \cdot \text{Au (g/t)}$  calculated from prices of US\$20/oz silver, US\$1.50/lb zinc, US\$1.00/lb lead, US\$1600/oz gold and metallurgical recoveries of 85% silver, 82% zinc, 83% lead and 85% gold estimated from test work commissioned by Silver Mines Limited.
2. Bowdens Silver Mineral Resource Estimate is reported to a 150g/t Ag Eq cut off and extends from surface and is trimmed to 300 metres RL which is approximately 320 metres below surface representing a potential volume for open-pit optimisation models.
3. In the Company's opinion, the silver, zinc, lead and gold included in the metal equivalent calculations have a reasonable potential to be recovered and sold.
4. Variability of summation may occur due to rounding.

# Competent Persons Statements

## Ore Reserve

The information in this report that relates to Ore Reserves within the Bowdens Silver Project is based on information compiled or reviewed by Mr Adrian Jones of AMC Consultants Pty Ltd who is a consultant to the Company. Mr Jones is a member of the Member of the Australasian Institute of Mining and Metallurgy and has sufficient experience that is relevant to the style of mineralisation and type of deposit under consideration, and to the activity being undertaken, to qualify as a Competent Person as defined in the 2012 edition of the 'Australasian Code for Reporting of Exploration Results, Mineral Resources and Ore Reserves' (JORC code). Mr Jones consents to the inclusion in this report of the matters based on the information in the form and context in which it appears. Mr Jones visited the Bowdens mine site during April 2017 to review the operations, consider the conditions of the site, and assess the data collection methods and techniques used by site personnel.

The Ore Reserve has been prepared by Mr Adrian Jones, AMC Consultants Pty Ltd, after peer review of the mining section of the Feasibility Study. Other experts relied upon include H & S Consultants Pty Ltd, GR Engineering Services Limited, ATC Williams Pty Limited. and Jacobs Australia Pty Limited, for Mineral Resources, Metallurgy & Process Design and Tailing Storage Facility design. Work on environmental, marketing and logistics and the financial modelling were undertaken by other consultants on behalf of the Company and certified by representatives of Silver Mines.

## Mineral Resources

The information in this report that relates to Mineral Resources is based on work compiled by Mr Arnold van der Heyden who is a Director of H & S Consultants Pty Ltd. Mr van der Heyden is a Member and Chartered Professional (Geology) of the Australian Institute of Mining and Metallurgy and has sufficient experience that is relevant to the style of mineralisation and type of deposit under consideration, and to the activity being undertaken, to qualify as a Competent Person as defined in the 2012 edition of the 'Australasian Code for Reporting of Exploration Results, Mineral Resources and Ore Reserves' (JORC code). Mr van der Heyden consents to the inclusion in this report of the matters based on the information in the form and context in which it appears.

## Exploration and Drill Results

The information in this report that relates to mineral exploration drill results from the Bowdens Silver Project and Tuena Gold Project is based on information compiled or reviewed by Dr Darren Holden who is an advisor to the company. Dr Holden is a Fellow of the Australasian Institute of Mining and Metallurgy and has sufficient experience that is relevant to the style of mineralisation and type of deposit under consideration, and to the activity being undertaken, to qualify as a Competent Person as defined in the 2012 edition of the 'Australasian Code for Reporting of Exploration Results, Mineral Resources and Ore Reserves' (JORC code). Dr Holden consents to the inclusion in this report of the matters based on the information in the form and context in which it appears.